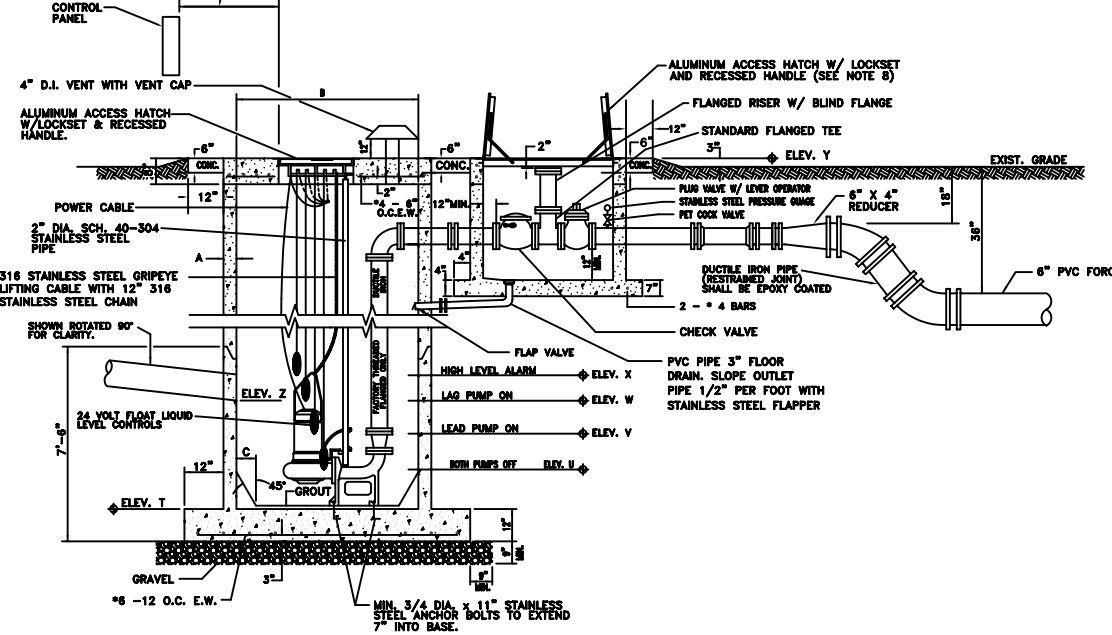


PLAN VIEW
N.T.S.



SECTION VIEW
N.T.S.

WET WELL AND VALVE VAULT LINER

DIAMETER (FEET)	THICKNESS (INCHES)					MATERIAL	MANUFACTURER
	3-6	7-12	13-20	21-25	26-35		
6							
8							
10							

PUMPING STATIONS	DIMENSIONS	ELEV. AT CONST.
DIM A	7"	
DIM B	6'-0"	
DIM C	10'	
DIM D	11.5'	
DIM E	NOTE B	
DIM F	NOTE B	
DIM G	4.25'	
DIM H	6'-0"	
DIM J	18'-6" MIN.	
DIM K	4'-6"	
DIM L	9'-4" MIN.	
ELEV T		
ELEV U		
ELEV V		
ELEV W		
ELEV X		
ELEV Y		
ELEV Z		

100 YEAR FLOOD ELEVATION= _____

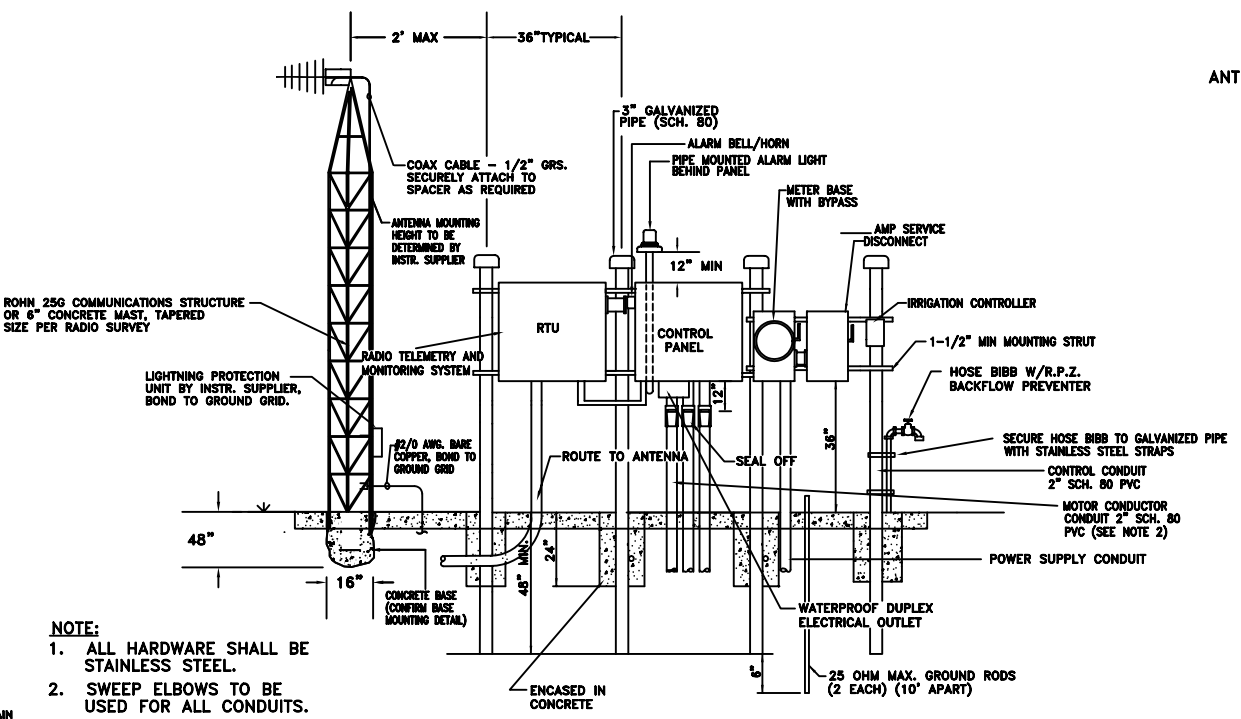
* PER PUMP MANUFACTURERS REQUIREMENT

- GENERAL NOTES:
- WET WELL AND VALVE VAULT SHALL HAVE AN INTEGRAL INTERIOR LINER AS SPECIFIED IN SECTION 46.2 OF THE UTILITIES MANUAL.
 - WET WELL AND VALVE VAULT EXTERIORS SHALL BE COATED WITH COAL TAR (TWO COATS, 9 MILS EACH.)
 - BASE AND FIRST RISER UNIT TO BE CAST MONOLITHIC.
 - VALVE VAULT SHALL BE SIZED TO PERMIT EASY REMOVAL OF CHECK VALVE SPINDLES WITH MINIMUM CLEARANCES AS SHOWN FOR 6" DIAMETER PIPE AND SMALLER. CLEARANCES SHALL INCREASE AS REQUIRED FOR LARGER PIPE SIZES.
 - VALVE VAULT SHALL DRAIN INTO WET WELL.
 - ALL LOCATIONS WHERE PIPES ENTER OR LEAVE THE WET WELL OR VALVE VAULT SHALL BE MADE WATERTIGHT WITH WALL SLEEVE OR NON-SHRINK GROUT.
 - THERE SHALL BE NO VALVES OR ELECTRICAL JUNCTION BOXES IN WET WELL.
 - WET WELL AND VALVE VAULT COVERS SHALL BE ALUMINUM WITH 304 S.S. HARDWARE AND LOCK BRACKET. SIZE AS REQUIRED BY PUMP MANUFACTURER,

- FLEXIBLE COUPLING SHALL BE SLEEVE TYPE.
- PUMPS SHALL BE:
MANUFACTURER: FLYGT _____ ABS _____; MODEL: _____; IMP: _____; DIA: _____; MM, SPEED: _____ RPM; DISCHARGE SIZE: _____ IN.; VOLTAGE: _____; HZ.: _____; PHASE: _____; H.P.: _____; MIN. SOLID SIZE: _____ IN.; CURVE: _____.
- ALL HARDWARE IN WET WELL AND VALVE BOX TO BE STAINLESS STEEL.
- OPERATING CONDITIONS:

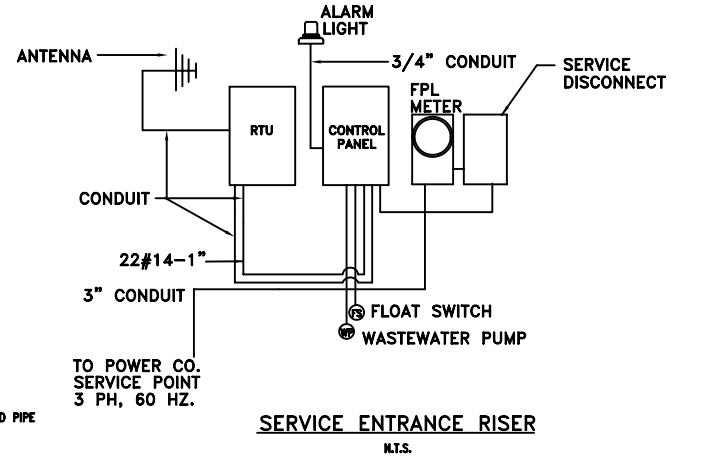
POINT	GPM	TOTAL DYNAMIC HEAD (FEET)
MIN. OP. COND.	0.0	
DESIGN OP. COND.		
MAX. OP. COND.		

- ALL EXPOSED METAL SHALL BE PAINTED WITH 2 COATS OF EXTERIOR ENAMEL PAINT.
- THE DONATION OF A GENERATOR SET OR PRO RATA AMOUNT SHALL BE REQUIRED IN ACCORDANCE WITH SECTION 46.6 OF THE UTILITIES MANUAL AS BASED ON THE SPECIFICATIONS NOTED ON THIS SHEET.



PUMP STATION CONTROL PANEL - RADIO TELEMETRY AND MONITORING SYSTEM
INSTALLATION DETAIL
N.T.S.

- NOTE:
- ALL HARDWARE SHALL BE STAINLESS STEEL.
 - SWEEP ELBOWS TO BE USED FOR ALL CONDUITS.
 - ALL GROUND RODS AND WIRING THROUGH CONCRETE MUST BE IN CONDUIT.



SERVICE ENTRANCE RISER
N.T.S.

- NOTES:
- METER BASE MAY BE REVERSED IF REQUIRED BY POWER COMPANY.
 - WHEN TWO (2) SEPARATE CONDUCTOR-TYPE MOTORS ARE USED, CONDUIT SHALL BE INCREASED TO 3 INCHES.
 - POWER SUPPLY SHALL BE UNDERGROUND TO AND ON THE LIFT STATION SITE AND SHALL BE 3 PHASE FROM A 3 PHASE SOURCE ONLY.
 - TO INCLUDE GENERATOR PLUG COMPATIBLE FOR LIFT STATION.
 - RADIO TELEMETRY AND MONITORING SYSTEM TO CITY OF SANFORD SPECIFICATIONS.
 - PIPE MOUNTED ALARM LIGHT SHALL BE INGRAM LRX-40 (RED) 120 VAC OR EQUAL.
 - A STREET LIGHT SHALL BE POSITIONED IN THE RIGHT-OF-WAY LEFT OF THE STATION'S DRIVEWAY.
 - A WEATHERPROOF LOCKABLE ELECTRICAL OUTLET OUTSIDE OF THE CONTROL PANEL SHALL BE INSTALLED.
 - RTU, CONTROL AND SERVICE DISCONNECT PANEL BOXES SHALL BE OF STAINLESS STEEL.
 - THE AC POWERED IRRIGATION CONTROLLER SHALL BE MOUNTED ON THE PANEL SUPPORT STRUCTURE.

GENERATOR SET SPECIFICATIONS

MAKE: _____ MODEL: _____ PHASE: 3 HERTZ: 60 VOLTS _____ WIRE: 4 RATED _____ KW STANDBY _____ KVA _____ RPM _____

- ONE (1) _____ LB. SINGLE AXLE TRAILER TO INCLUDE THE FOLLOWING:
- HYDRAULIC BRAKES
 - ICC LIGHTING
 - FENDERS
 - BALL COUPLER
 - COMMERCIAL TIRES - HWY. RATED
 - FRONT JACK STAND
 - REAR STABILIZER JACKS
 - _____ GALLON FUEL TANK
 - FUEL LEVEL GAUGE
 - FILL/VENT CAP
 - FUEL SUPPLY PORT
 - FUEL RETURN PORT

- ENCLOSED ACCESSORIES:
- WEATHER PROTECTIVE HOUSING MOUNTED
 - SILENCER MOUNTING KIT
 - CRITICAL SILENCER
- COOLING SYSTEM:
- BLOCK HEATER 120 VOLT 1500 WATTS
 - UNIT MOUNTED RADIATOR 40 DEG. C
- FUEL SYSTEM:
- FLEX FUEL LINES
 - BASE TANK _____ GAL. SINGLE WALL, INTEGRAL IN TRAILER
- CIRCUIT BREAKER/ACCESSORIES
- _____ AMP. U.I. _____ VOLT CIRCUIT BREAKER
- CONTROLLER/INSTRUMENT PANEL
- AC AMMETER, VOLTMETER, 2-1/2", 2% AC FREQ. METER 2-12", 5% AW/YW SELECTOR SWITCH, 7 POSITION
 - PANEL ILLUMINATION LIGHTS, AUDIBLE ALARM WITH SILENCE SWITCH
 - VOLTAGE ADJUSTMENT POTENTIOMETER
 - OIL PRESSURE, WATER TEMP. GAUGE, RUNNING TIME METER, DC VOLTMETER
 - AUTOMATIC SENSING CONTROLS, COOL DOWN TIMER
 - CYCLE CRANKING, OVERVOLTAGE SENSING

- SAFETY SHUTDOWN, INDICATING LIGHTS AND ALARMS FOR THE FOLLOWING:
- LOW OIL PRESSURE
 - OVERSPEED
 - OVERCRANK
 - HIGH ENGINE TEMPERATURE
 - AUXILIARY/LOW WATER LEVEL/OVERVOLTAGE
- ELECTRICAL ACCESSORIES:
- STARTING BATTERY/BATTERIES 12 VOLT
 - BATTERY RACK AND CABLES
 - VOLTAGE REGULATOR 2% CHARGER TRICKLE 2 AMP.
- ADDITIONAL ACCESSORIES:
- ISOLATORS
 - SKID END CAPS
 - WARRANTY 1 YEAR
 - OIL DRAIN LINE
 - O/M MANUALS 3 SETS
 - 50 FOOT 2/OT POWER CABLE WITH MALE CONNECTOR
 - TRAILER TO D.O.T. STANDARDS
 - OIL INITIAL FULL
 - ANTI-FREEZE INITIAL FILL 50/50

- ELECTRICAL PACKAGE TO INCLUDE:
- (1) _____ AMP LOAD CENTER
 - 50 FEET OF 2/OT REQUIRED CABLE
 - (1) _____ AMP PLUG - _____
- START UP AND ONSITE TESTING
- STARTUP NOT TO EXCEED 4 HOURS
 - OPERATIONAL TRAINING NOT TO EXCEED 4 HOURS