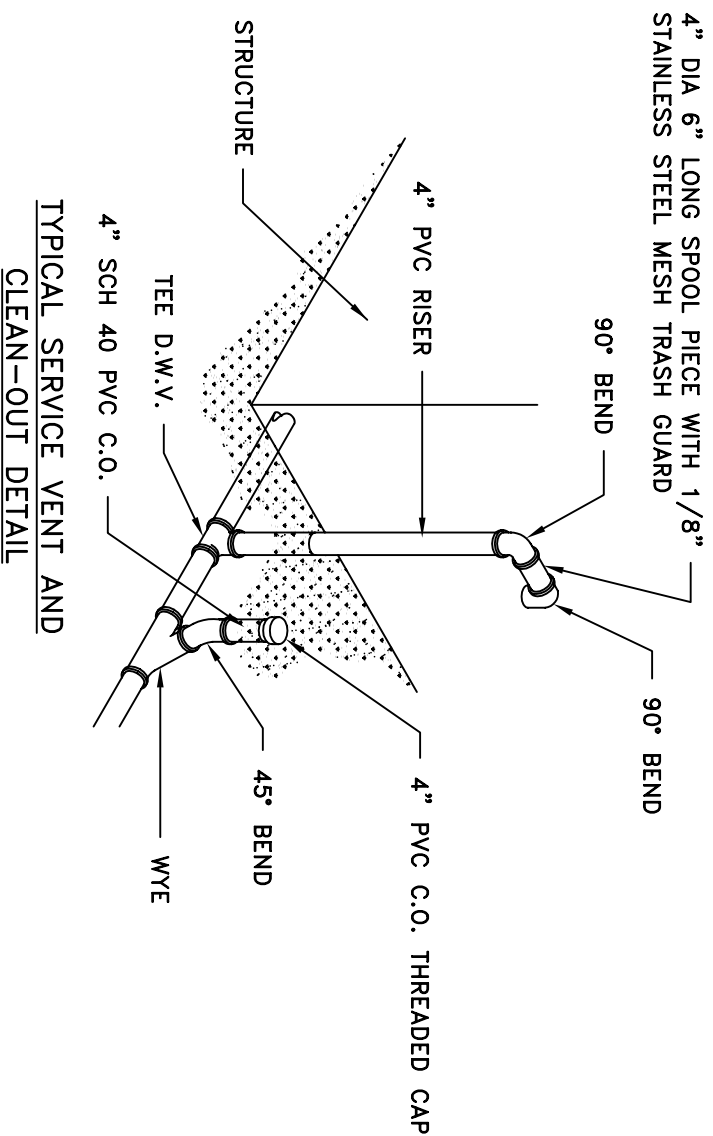
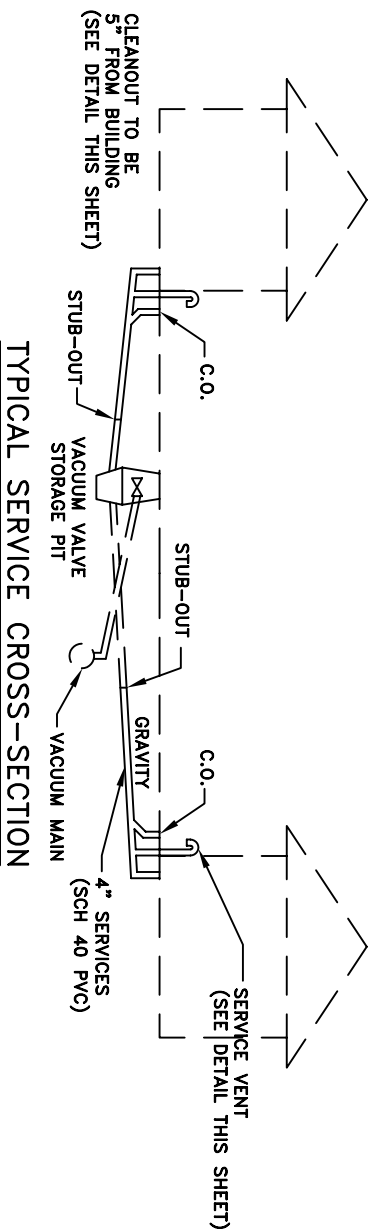


PRODUCTS AND MATERIALS:

- A. PIPE
PIPE SHALL BE SCHEDULE 40 PVC SOLVENT WELD PIPE CONFORMING TO ASTM D1784 AND D1785.
- B. FITTINGS
FITTINGS SHALL BE OF THE DRAIN WASTE AND VENT TYPE WITH SOLVENT WELD CONNECTIONS. FITTINGS SHALL CONFORM TO ASTM F348, D2466 AND D3036.
- C. PVC CLEANER, PRIMER AND GLUE
A SEPARATE CLEANER, PRIMER AND GLUE SHALL BE USED FOR THE SOLVENT WELD AND CONFORM TO ASTM DESIGNATION D2564.

INSTALLATION DETAILS:

ILLUSTRATED BELOW ARE SPECIFIC DETAILS FOR THE INSTALLATION OF THE NEW SANITARY SEWER LATERAL FOR CONNECTION TO THE VACUUM SEWER SYSTEM.



VACUUM SEWER
SERVICE LATERAL SPECIFICATIONS