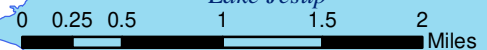
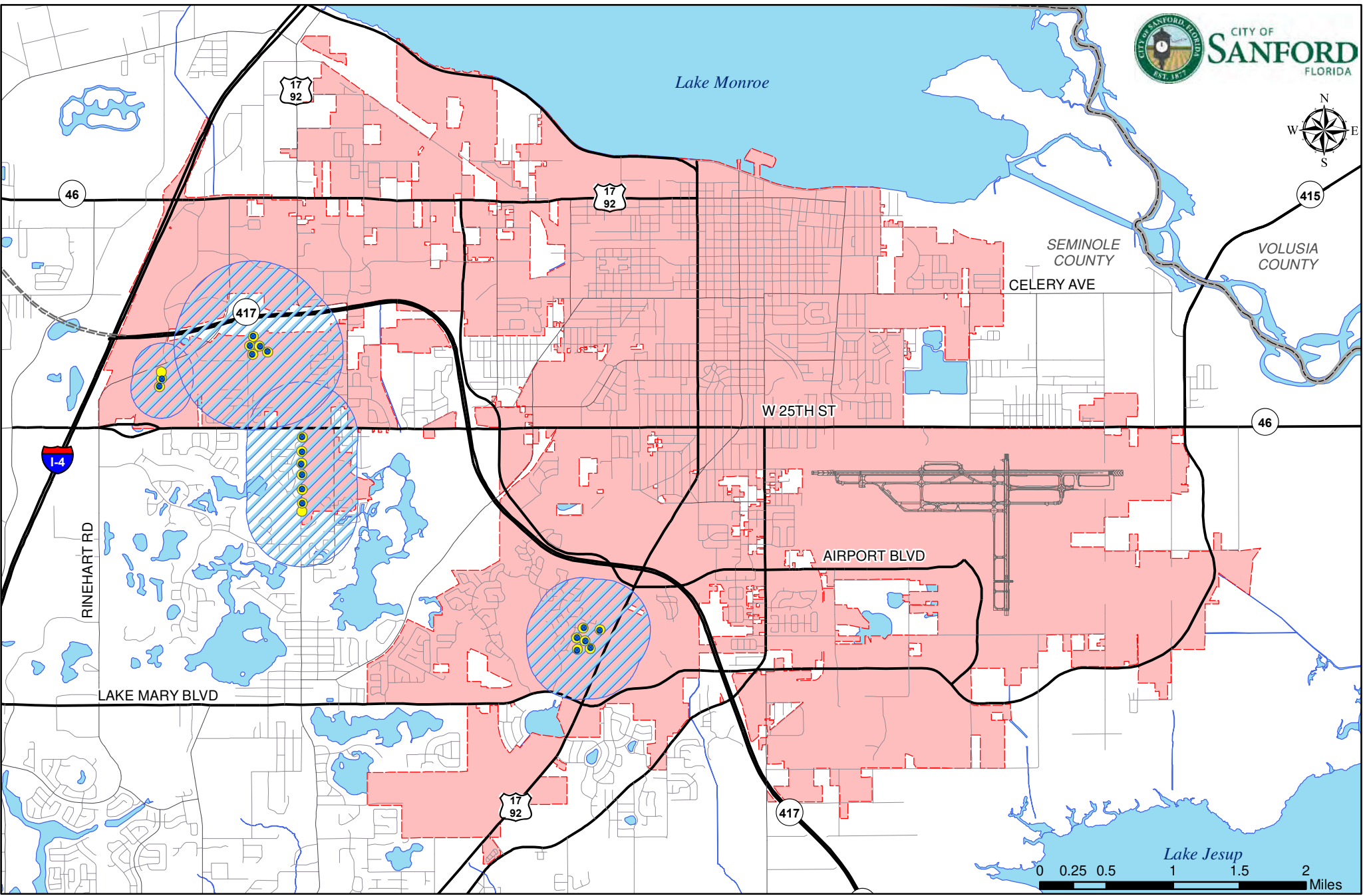


Natural Resources

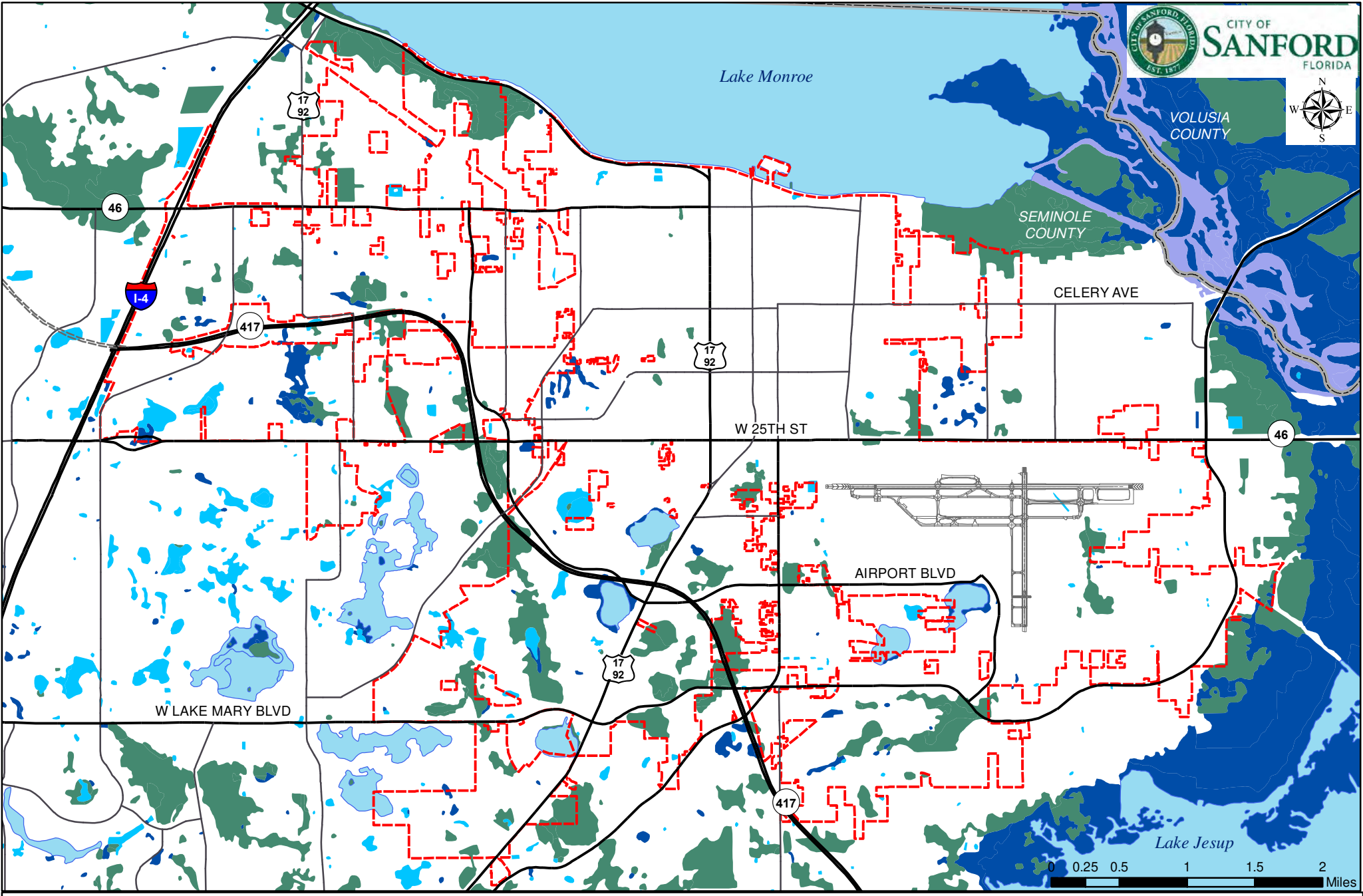
- MAP 9. *Wellfield Protection, 2017*
- MAP 10. *Wetlands, 2017*
- MAP 11. *Lakes, Rivers and Canals, 2017*
- MAP 12. *Soils, 2017*
- MAP 13. *Floodplain, 2017*
- MAP 14. *Vegetative Communities, 2017*
- MAP 15. *Wildlife Habitat Area, 2017*












- Existing Wellheads
- County Boundary
- Primary Protection Zone
- Sanford City Limits
- ▨ Secondary Protection Zone

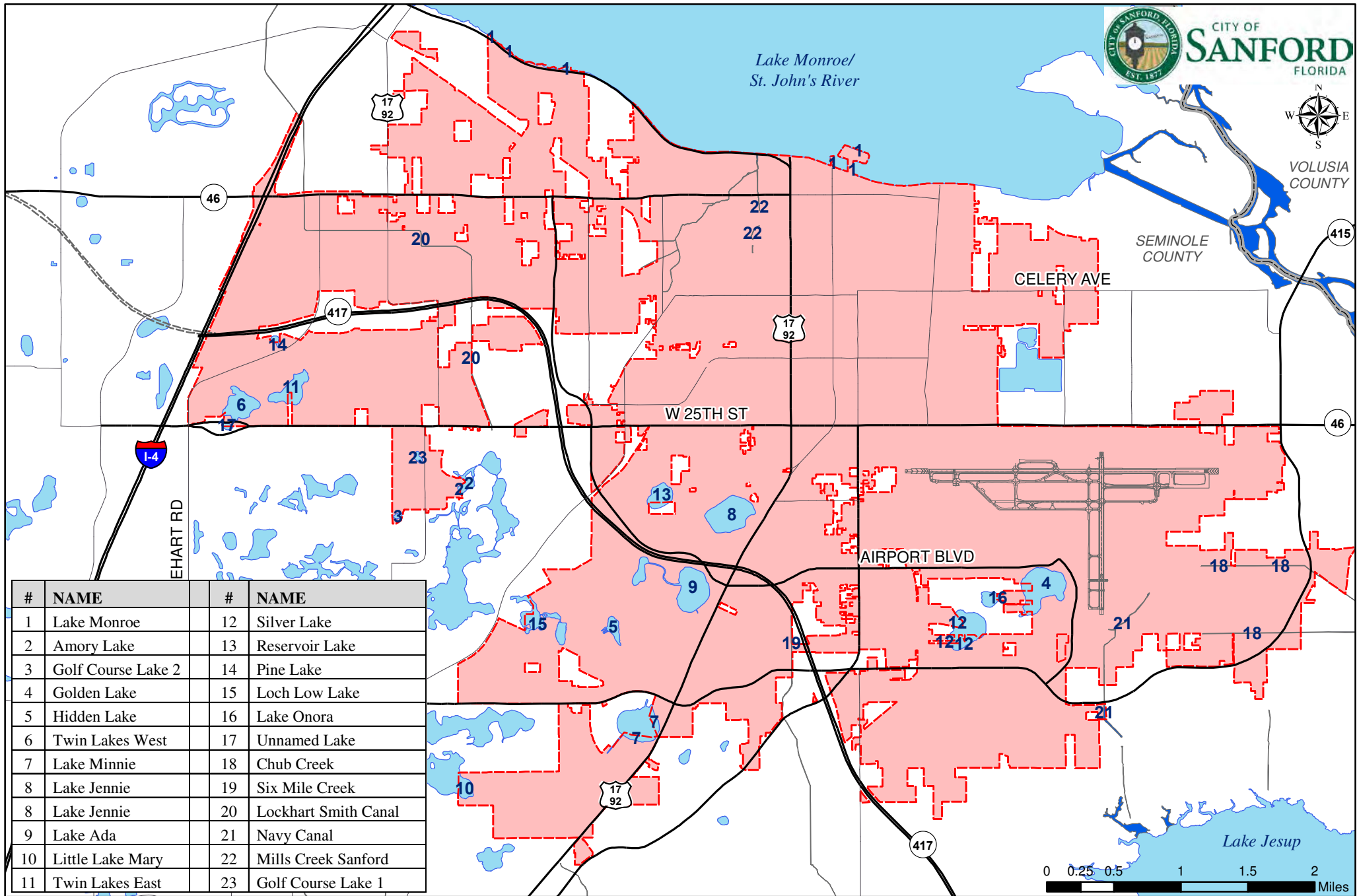
Wellfield Locations & Protection Zones

Map 9







- | | | |
|---|--|---|
|  Freshwater Emergent Wetland |  Lake |  Sanford City Limits |
|  Freshwater Forested/Shrub Wetland |  Riverine |  County Boundary |
|  Freshwater Pond |  Other |  Orlando/Sanford Intl. Airport |

Wetlands



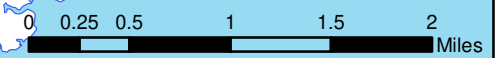
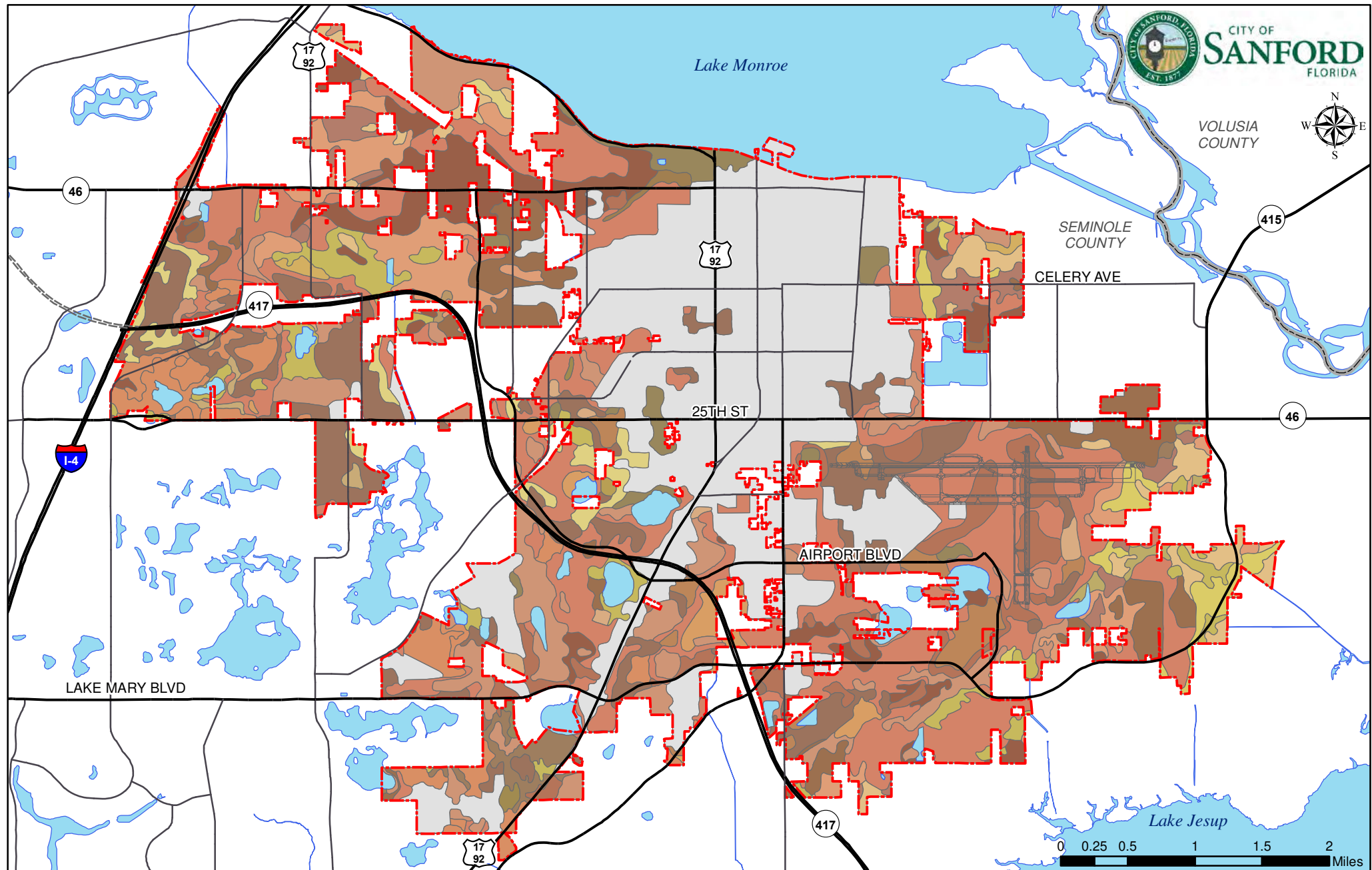
#	NAME	#	NAME
1	Lake Monroe	12	Silver Lake
2	Amory Lake	13	Reservoir Lake
3	Golf Course Lake 2	14	Pine Lake
4	Golden Lake	15	Loch Low Lake
5	Hidden Lake	16	Lake Onora
6	Twin Lakes West	17	Unnamed Lake
7	Lake Minnie	18	Chub Creek
8	Lake Jennie	19	Six Mile Creek
8	Lake Jennie	20	Lockhart Smith Canal
9	Lake Ada	21	Navy Canal
10	Little Lake Mary	22	Mills Creek Sanford
11	Twin Lakes East	23	Golf Course Lake 1

Note: Lake Monroe is considered part of the St. John's River

-  Lake
-  Sanford City Limits
-  River
-  County Boundary

Lakes, Rivers and Streams

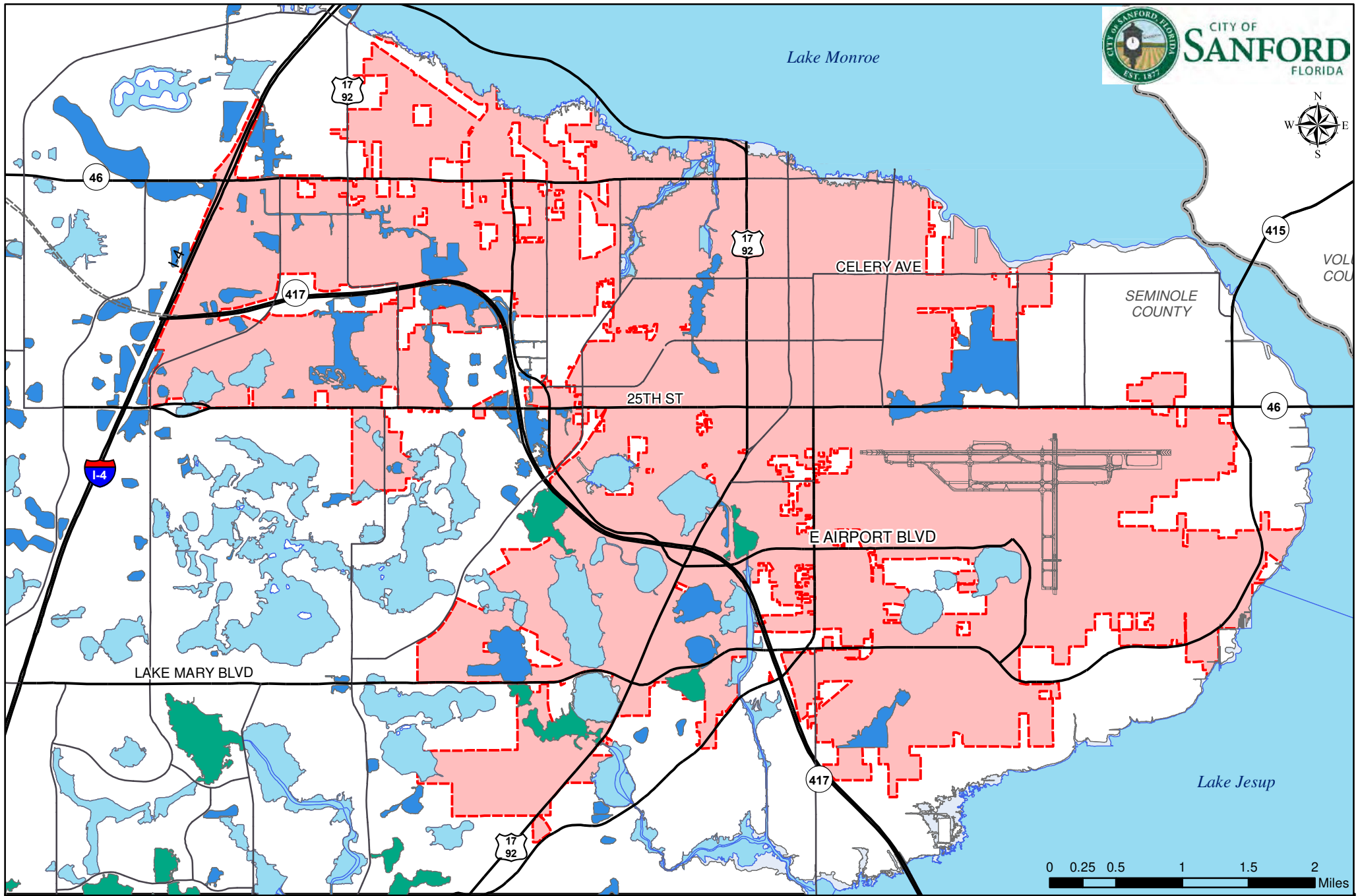
Map 11



- | | | | | |
|---|---|---------------------------------------|-----------------------------------|--------------------------------|
| County Boundary | Eugallie and Immokalee Fine Sands | Adamsville-Sparr Fine Sands | Pomello Fine Sand | Tavares-Millhopper Fine Sands |
| City Limits | Felda and Manatee Mucky Fine Sands - Depressional | Myakka and Eugallie Fine Sands | Pompano Fine Sand | Urban Land |
| Basinger, Samsula, and Hontoon Soils - Depressional | Immokalee Sand | Nittaw Mucky Fine Sand - Depressional | St. Johns and Eugallie Fine Sands | Wabasso Fine Sand |
| Basinger and Smyrna Fine Sands - Depressional | Brighton, Samsula, and Sanibel Mucks | Paola-St. Lucie Sands | Arents | Astatula-Apopka Fine Sands |
| Canova and Terra Ceia Mucks | Malabar Fine Sand | Pineda Fine Sand | Seffner Fine Sand | Basinger and Delray Fine Sands |
| | Manatee, Florida, and Holopaw Soils | Udorthents, Excavated | Tavares-Millhopper Complex | Water |

Soils Map

Map 12



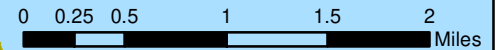
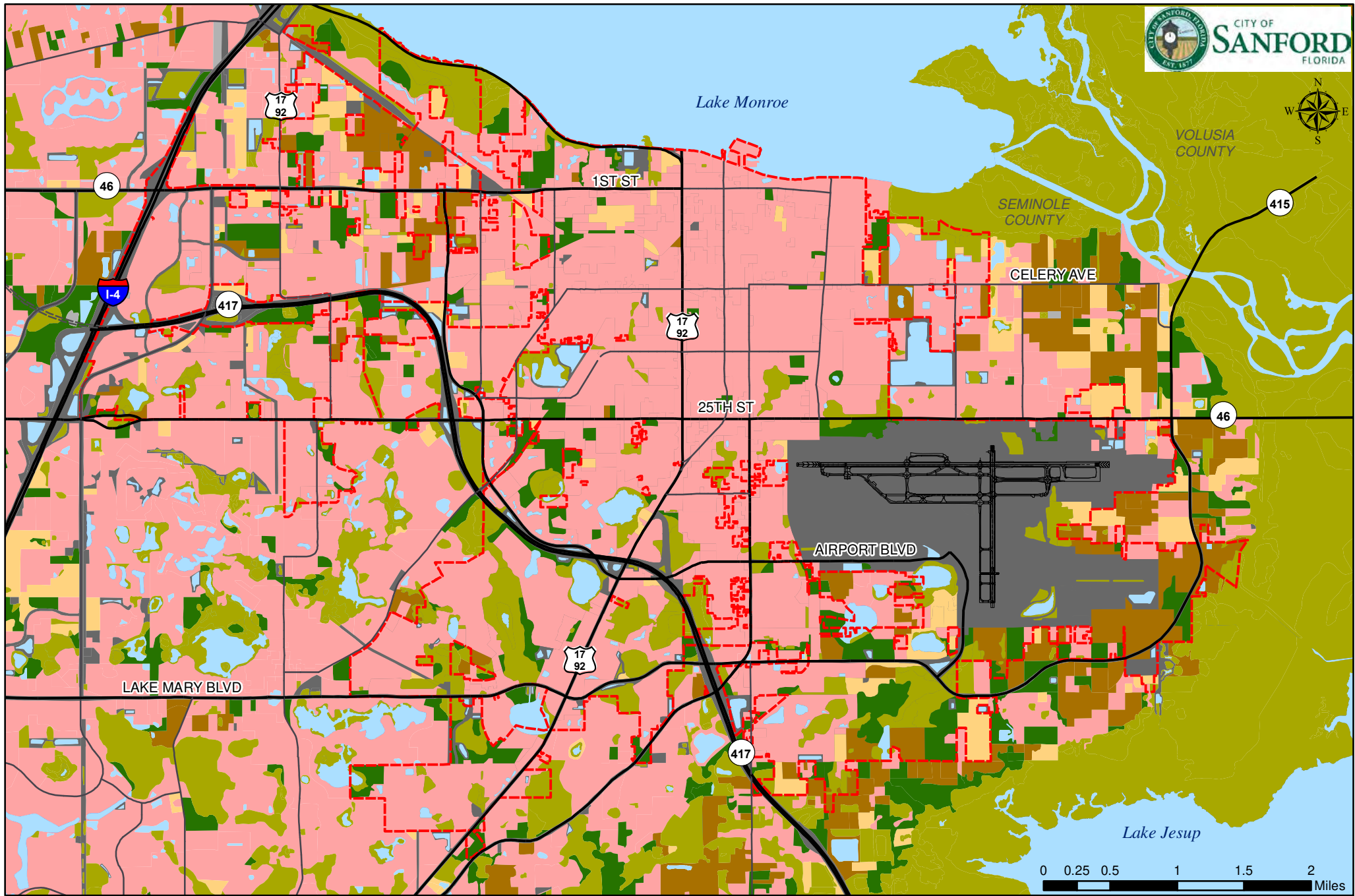
- FEMA Flood Zone
- Zone A
- Zone AH
- Sanford City Limits
- Zone AE
- Zone X
- County Boundary
- 0.2% Annual Chance Flood Hazard

Sanford Floodplain Map

Map 13

Note: This map contains a GIS representation of the FEMA Flood Zone designations. For more detailed floodplain maps, please refer to the FEMA Flood Map Service Center.

Source: FEMA Flood Insurance Rate Map (FIRM), 2007



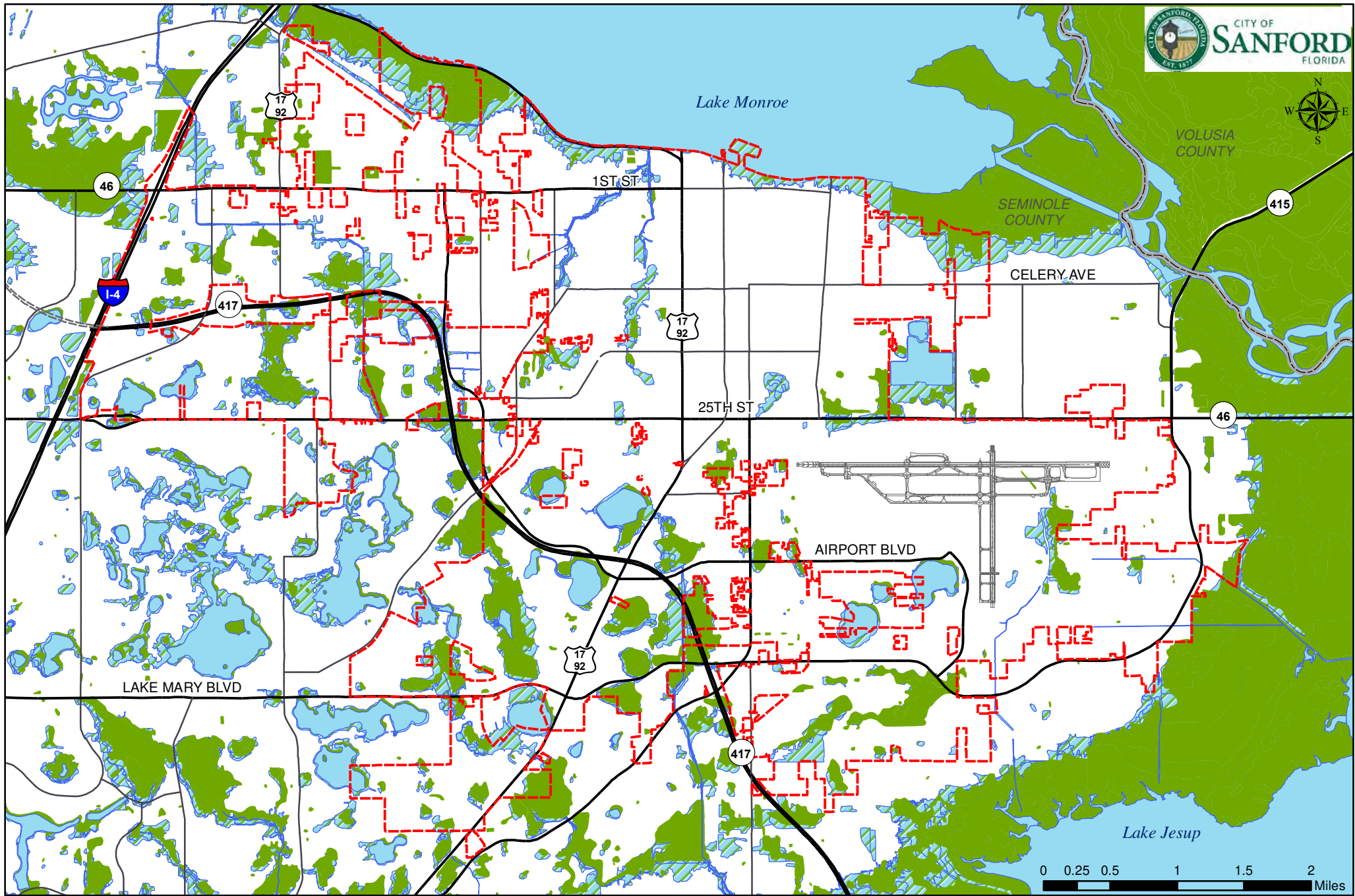
Land Use Cover Classification

- | | | |
|-------------|--|-------------|
| Urban | Upland nonforested | Wetland |
| Agriculture | Forest | Barren land |
| Water | Transportation, Communication, Utilities | |

- County Boundary
- Sanford City Limits

Vegetative Communities

Map 14



- Wetlands
- Environmentally Sensitive Lands
- Sanford City Limits
- County Boundary

Wildlife Habitat Areas

Map 15

Source: Seminole County